

rehabhire & sales

YOUR
LEADING
HEALTHCARE
EQUIPMENT
PARTNER

Joerns
Oxford[®] Journey
Redefining Patient Handling



1300 000 030 | rehabhire.com.au

YOUR
LEADING
HEALTHCARE
EQUIPMENT
PARTNER

The Oxford® Journey lift is an ultra compact, portable folding stand aid with best-in-class functionality. It is compact and lightweight allowing caregivers to manoeuvre in tight spaces and can be folded for easy storage and transportation. The unique adjustable cow-horn mechanism supports a wider range of patient heights and sizes, allowing your facility to have one lift that meets the needs of many.

Features and Benefits

- Compact folding design for easy storage and transportation
- Unique adjustable cow-horn function
- Ergonomic design considerations
- Smart™ Monitor diagnostic control system
- Contoured, height adjustable knee pad
- Removable foot tray for walking/rehabilitation activity

The Journey has the option of both a Standing or Transport sling, providing the carer with the option of performing various care duties including:

- Standing
- Toileting
- Point to point transfers
- Walking and rehabilitation activity

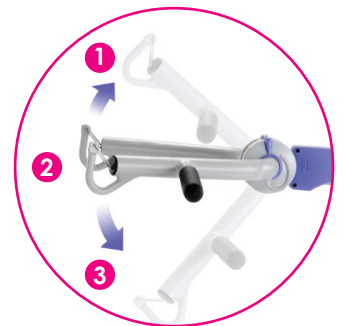
Folding Design

Unlike other stand aids on the market, the Journey can fold making it easy to transport and store. This functionality gives active users the option to travel outside the confines of their own home.

Unique Adjustable Cow-Horn

The Journey's unique adjustable cowhorn ensures maximum flexibility and improved patient comfort. With three cow-horn height options, the Journey can support a wider range of patient heights and sizes.

Simply pull back the trigger mechanism on the boom and select the required cow-horn height.



Ergonomic Design Considerations

The Journey was designed with the **five** key principles of moving and handling in mind. This direct correlation ensures Oxford's lift designs are simple, safe and above all comfortable to use.

This view is shared by our clinical consultant team, who have assisted us in conducting detailed usability surveys to ensure the Journey meets the true needs of the patient, carer and the environment in which it operates.

- 1 Get close to the load
- 2 Use a wide stable base
- 3 Ensure a comfortable firm grasp
- 4 Keep spine close to neutral
- 5 Make sure movement is smooth

Smart™ Monitor

The Smart™ Monitor control system records the exact amount of work completed by the actuator each and every time the lift is used, regardless of a patient's weight or lift height covered. The intelligent system advises the user to schedule key maintenance helping to ensure your lift remains in optimum condition.

- Identifies total lift actuations and work completed
- Identifies lift overloads (exceeding SWL)
- Identifies service interval periods
- Increases patient safety and product service life



Foot 'push pad' helps reduce the force needed to initiate forward movement.



Over-sized push handle for improved handling and manoeuvrability.



Hand control clip ensures convenient storage when not in use.

Removable Foot Tray

By removing the foot tray, the Journey transforms into a rehabilitation aid that allows a patient to fully stand. Once standing, the patient can be encouraged to walk independently.



Height Adjustable Knee Pad

The Journey's contoured knee pad is height adjustable to ensure the patient feels comfortable and fully supported during transfer. A retractable safety belt provides additional support for patients needing further reassurance.



Specifications

Safe Working Load	155kg
Maximum Overall Length	1000mm
Minimum Overall Length	935mm
Maximum Overall Height	1600mm
Minimum Overall Height	1130mm
Height Folded	525mm
Depth Folded	1040mm
Widest Point Between Support Handles	680mm
Maximum Height to Attachment Point	1530mm
Minimum Height to Attachment Point	720mm
Turning Radius	1145mm
Legs Open: External Width	970mm
Legs Open: Internal Width	875mm
Legs Closed: External Width	685mm
Legs Closed: Internal Width	590mm
Overall Height of Legs	110mm
Ground Clearance	30mm
Front Twin Castors	75mm
Rear Braked Castors	100mm
Weights	
Mast, Base & Boom Assembly	37.4kg
Power Pack	2.8kg
Total	40.2kg
Base Assembly	18.2kg
Mast & Boom Assembly Not Including Battery	19.2kg

Specifications may vary due to manufacturing tolerances.

Electrical Specifications

Battery 1 x 24 volt rechargeable sealed lead acid type
 Battery capacity 2.9 Ampere hours
 Charger rated input 100 - 240 V AC / 50 / 60 Hz
 Charger rated output 29.5 V DC Max 19W / IPX5

Electrical Shock Protection

Charger: class II
 Lift: internal power source



Degree of Shock Protection

Charger: Type B
 Lift: Type B

Intended Operating Environment

>+5° <+40°
 Outside this environment functionality and safety may be compromised.

Warranty

2 years

rehabhire & sales

1 300 000 030

320 Lorimer Street Port Melbourne
contact@rehabhire.com.au
rehabhire.com.au

rehabhire & sales **REPAIRS AND SERVICE**

REGULAR MAINTENANCE OR REPAIRS

1 300 000 030

Unit 6 | 52 Wirraway Drive Port Melbourne
service@rehabhire.com.au
rehabhire.com.au/repairs-and-service

rehabinstallation

CAN MODIFY EVERY ROOM IN YOUR HOME TO
ENSURE IT IS ACCESSIBLE, SAFE, AND COMFORTABLE

1 300 000 030

320 Lorimer Street Port Melbourne
contact@rehabinstallation.com.au
rehabinstallation.com.au



Registered NDIS Provider