

OSKA™ Aria³

Series4-V3

Brochure



CHANGING LIVES



MISSION:
CHANGING LIVES



GOAL 1

ELIMINATE AVOIDABLE PRESSURE DAMAGE



GOAL 2

IMPROVE QUALITY OF LIFE

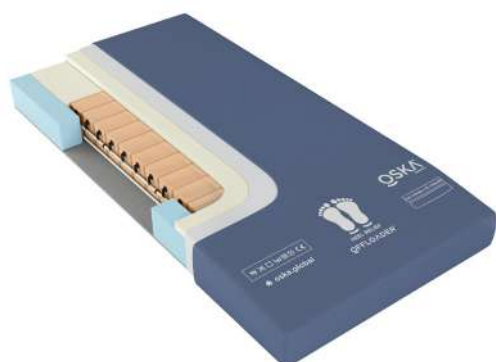


GOAL 3

REDUCE COSTS AND LITIGATION RISK

OSKA™ Aria³ An innovative pumpless self-adjusting air mattress

Series4-V3



*when on a turning cycle or the wound is on the heel which is 100% elevated

SPECIFICATION

MAX USER WEIGHT	SIZE	BARIATRIC SIZE
230kg/36st	88x200x18cm	107x200x18cm



NO POWER NEEDED



THE SOUND OF SILENCE



AVOID DISORIENTATION



LOW MAINTENANCE

Prevention:	Very High Risk
Treatment:	Category 3
Comfort:	★★★★★
Type:	Replacement

Features

- Fire evacuation base
- Pumpless - High comfort
- Heel Relief slope
- Side Wall Support
- Welded Seams
- V-GUARD™ Technology
- *OFFLOADER™

Suitable as an aid in the prevention and treatment of pressure damage up to and including category 3.

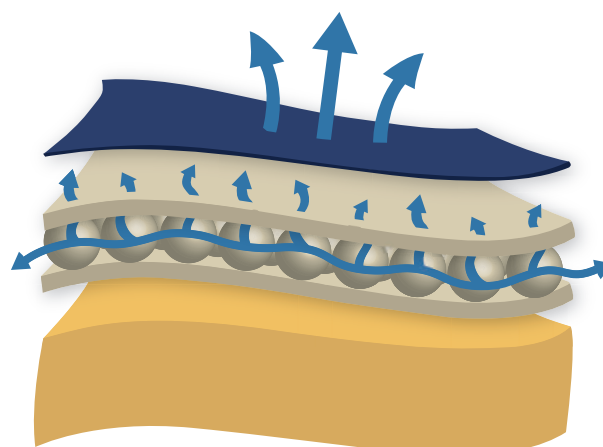
Air cells react instantly when the patient is repositioned, to equalise the pressure areas.

*The OFFLOADER™ function can be used to suspend the heel for 'zero pressure' making it suitable as an aid in the prevention and treatment of heel ulcers up to and including category 4.

Aerolite™

AEROLITE™ is a highly responsive foam with microclimate properties which allows the air to flow through the foam keeping the body cool and dry. Good microclimate management is important in preventing pressure ulcers from forming.

This foam makes up the top pressure relieving layer and OFFLOADER™ feature.





OFFLOADER™

The OFFLOADER™ function can be used to suspend the heel for 'zero pressure' making it suitable as an aid in the prevention and treatment of heel ulcers up to and including category 4.



HEEL RELIEF SLOPE

The mattress is crated with a decline at the foot end. This assists in the prevention of pressure ulcers in one of the most vulnerable areas on the body.

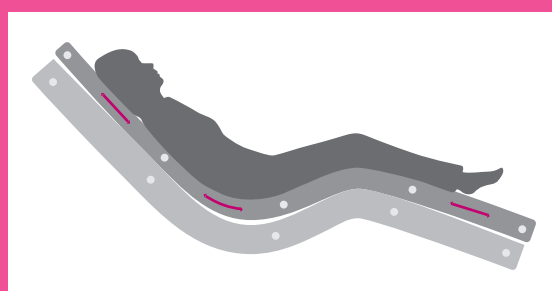


FIRE EVACUATION BASE

In the event of a fire, use the mattress to help evacuate your patient with our unique and innovative evacuation system. Simply pull out the straps and secure your patient to the mattress using the velcro fasteners. Handles are located on the end of the mattress to allow you to move your patient safely.

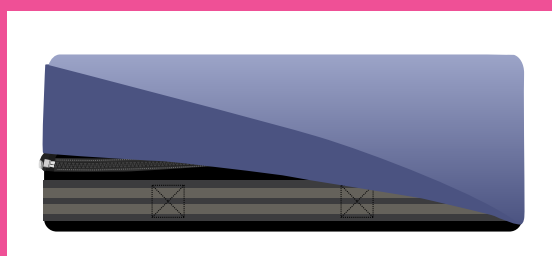
ANTI-SHEAR

Designed to significantly reduce shear and friction which often leads to tissue damage. The base foam remains in position on the bed frame, whilst the top moves with the user.



WATERFALL FLAP

It is concealed by fluid resistant extra long waterfall flap and when opened, gives access to confirm that fluids have not permeated the cover and damaged the foam. Inspection control is maintained for handles.



The Ultimate Mattress Covers



PRESSURE RELIEF

V-Guard Technology mattress covers are designed to significantly reduce pressure ulcers. Our formulations reduce friction and help disperse moisture, both of which are major contributing factors to the formation of pressure ulcers.



PATIENT COMFORT AND DURABILITY

V-GUARD Technology mattress covers are designed to provide comfort

- ☉ Multi stretch:
- ☉ Breathable: The moisture vapour transfer or “breathability” properties of V-Guard Technology help improve patient comfort.
- ☉ Offers exceptional durability without compromising comfort.



INFECTION CONTROL AND CLEANING REGIME

V-GUARD Technology mattress covers incorporate infection control and anti-decubitus characteristics. Our mattress covers provide an impenetrable barrier to viruses and bacteria. To clean, wipe down with warm water and mild detergent. If required cover can be machine wash <95°C. Cleaned with chlorine based chemical <10,000 ppm concentration.



LEGISLATION

V-Guard Technology mattress covers meet the latest legislative requirements including:

- ☉ DecaBDE and Halogen free
- ☉ Reach and ROHS compliant
- ☉ Biocidal Products Regulation compliant
- ☉ Flame retardent cover



TECHNICAL SPECIFICATION SUMMARY

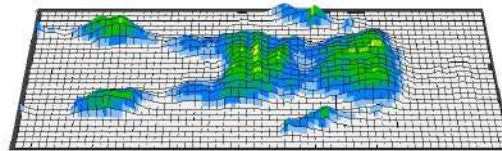
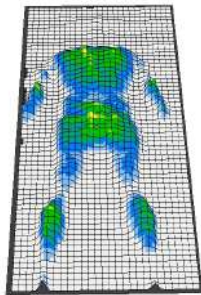
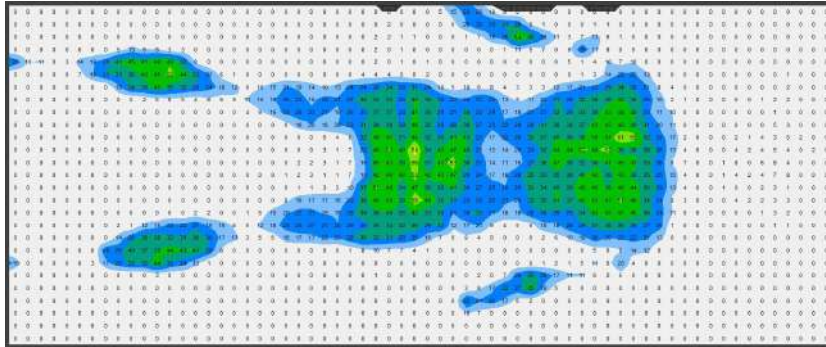
V-Guard Technology mattress covers boast an outstanding collection of technical properties that have been developed to make them the ultimate mattress covers for your organisation:

- | | |
|--|--|
| ☉ Hydrolysis resistance >1 year | ☉ Washable to 95°C |
| ☉ Excellent resistance to active chlorine | ☉ Antibacterial and Antifungal treated |
| ☉ Anti-decubitus | ☉ HF Weldable |
| ☉ FR to BS7175 Crib 5 / Crib 7 variant available | ☉ MVP (moisture vapour permeability) |
| ☉ Autoclave resistant | ☉ WPR >5m (water penetration resistance) |
| ☉ Dry cleanable | |

Pressure Maps

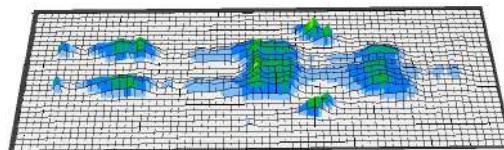
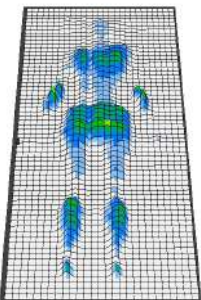
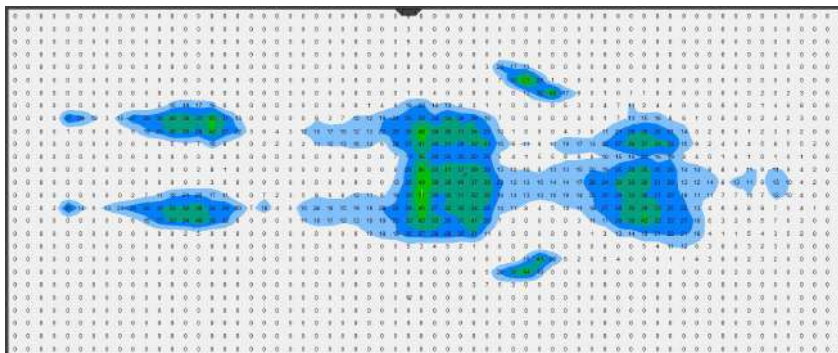
Oska Aria³

MALE | 90kg 185cm | Average Pressure 8.32 mmHg



Oska Aria³

FEMALE | 55kg 165cm | Average Pressure 4.29 mmHg



With no clear algorithm or selection guide it can be difficult to know what mattress you should be selecting for your patients.

Although the European Pressure Ulcer Panel (EPUAP 2014) gives an overview which is currently followed in clinical practice, for up to a Category 2 pressure ulcer when the client is able to reposition, or an air mattress is contraindicated, a non pumped system may be used.

For those with deep tissue injury, or category 3 or 4, a pumped system should be considered to support the underlying circulation and intermittent offloading of the bony prominences between turns.

To make this clear OSKA have devised a system, the OSKA SELECTOR™, to help carers identify if the patient is on the correct mattress.

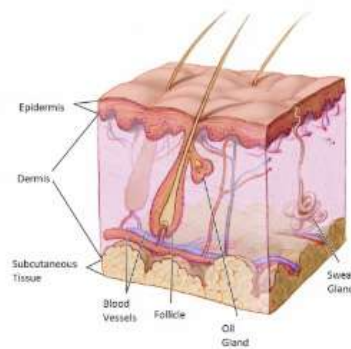
Where assessment and reassessments of risk for patients must be done holistically by a clinician, the dot system aims to serve as a guide or prompt.

Please note that no support surface can replace turns or repositioning which are still mandatory for those at risk as per the NICE guidelines (NICE 2015).

Categorization of pressure ulcers



Healthy Skin



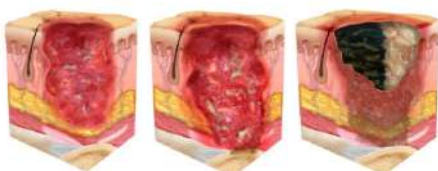
Superficial Category 1-2



- Intact skin with non-blanchable redness of a localized area usually over a bony prominence. Other signs of the area such as discolouration, oedema, warmer or cooler as compared to adjacent tissue may also indicate pressure injury. (Category 1 may be difficult to detect in individuals with dark skin tones. May indicate “at risk” persons.)
- Damage to the epidermis and/or dermis. The ulcer is superficial and may be visible as a blister on or an abrasion of the skin.



Deep / Unstageable Category 3-4

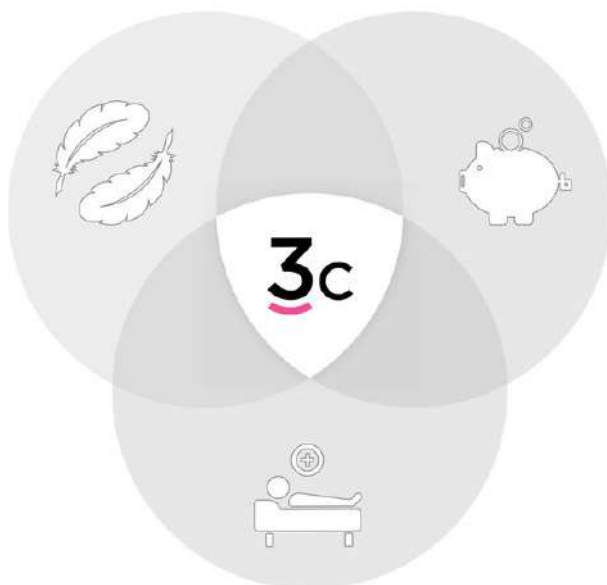


- Involves damage to the full thickness of the skin and includes injury to, or necrosis of, the subcutaneous tissue layer, and may extend down to but not through the underlying fascia.
- Deep tissue damage, necrosis or damage to the muscle, bone or connective tissue with wound cavitations.
- Full thickness skin and tissue loss in which the extent of tissue damage within the ulcer cannot be confirmed because it is obscured by slough or eschar. If slough or eschar is removed, a Stage 3 or Stage 4 pressure injury will be revealed.

THE 3c CONCEPT

We deliver specialist care products that enable healthcare professionals to make a difference. OSKA are continually developing pressure care products that meet the criteria of being clinically beneficial to patients, comfortable and affordable.

You know that every patients need is different, and so do we. That's why our 3c solution helps us to help you deliver the highest standard of care possible.



Flat pack option also available



CLINICAL

Outstanding performance

Prevention is better than cure

Focus on shear and pressure reduction



COMFORT

Ideal for palliative and dementia care

Holistic care

Eliminate non-compliance



COST

Reduce use of expensive air mattresses

Reduce electricity, servicing
and repair costs

Reduce risk of litigation costs



OSKA™

rehabhire & sales

310 Lorimer Street Port Melbourne Victoria 3207

t: 03 9646 7200 | e: contact@rehabhire.com.au | www.rehabhire.com.au