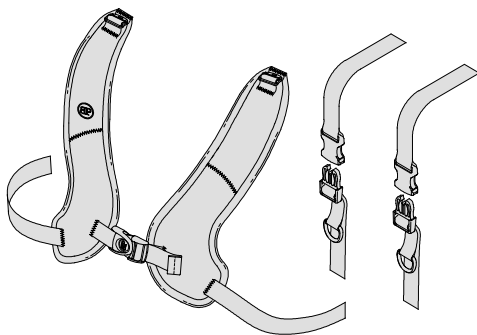


PivotFit™ Shoulder Harness

INSTALLATION AND USER'S INSTRUCTIONS

ART NOS. SH290 & SH295



PACKAGE CONTENTS

Package may contain one or more of the following:

- PivotFit Shoulder Harness
- Multi-directional Top Straps
- Cinch-Mount or Flat-Mount End-Fittings
- Cam Buckles (Optional – Art No. FS032-2)

These instructions provide important information for the safe use and maintenance of all Bodypoint PivotFit™ Shoulder Harnesses. Give these instructions to the user or their caregiver and review them to ensure that they are understood.

⚠ WARNING! Product should be installed and fitted by a qualified rehab technician.

For installation, this product should be mounted with:

- Flat-Mount end-fittings
- Cinch-Mount end-fittings
- Cam buckle (suitable for users up to 75kg)

Optional Bodypoint belt mounting hardware may be used for mounting to wheelchairs and seating systems.

⚠ WARNING! Because of the risk of choking, it is dangerous to use this product without stabilizing the pelvis – always use with a properly fitted pelvic support belt.

INTENDED USE:

⚠ WARNING! This product should only be used for positioning a person in a wheelchair or work chair. It is NOT intended for use as a transportation safety device, as a personal restraint device, or in any other application where its failure could result in injury. Misuse of this product is unauthorized and unsafe.

⚠ WARNING! This anterior trunk support must be properly fitted to support the user's trunk and shoulders without causing injury. Have your seating specialist demonstrate its proper adjustment and use.

- If it is too tight, it can restrict respiration and increase pressure across the shoulders and chest.
- If it is too loose, it can allow the user to slip down and may create a risk of strangulation.
- Accidental release of this product can allow the user to fall forward.
- A user's inability to self-release can be hazardous if the user slips down or is trapped in the wheelchair in an emergency.

If the user's physical or cognitive abilities could prevent them from safely operating this product, a caregiver must be present at all times during its use. Ensure that all caregivers know how to correctly adjust and unfasten the product.

⚠ WARNING! As with any new seating support, this product may change the way a person sits. Users must continue to practice regular pressure relief activities and skin integrity checks, not only where this product contacts the user, but also in primary pressure-bearing areas such as the sacrum, legs, and buttocks. If increased skin redness or irritation occurs, discontinue use and consult your physician or seating specialist. Failure to do so may result in serious injury, such as pressure ulcers.

⚠ WARNING! If a serious incident occurs related to the use of this product, it should be reported to the manufacturer (Bodypoint, Inc.) and the local Competent Authority.

PERIODIC SAFETY AND PERFORMANCE CHECKS: To ensure user safety, this product must be checked periodically for function and signs of wear. If the product does not function correctly or if significant wear is found in the buckles, mounting points, webbing, padding, or stitches, stop using it and contact your supplier for qualified repair or replacement by Bodypoint. Under no circumstance should this product be altered or repaired by unqualified persons — health and safety depend on it!



CLEANING: Machine wash, hot, 60°C (140°F). Do not bleach. Tumble dry, low temperature, or drip dry. Do not iron. (Placing the product inside a cloth bag during washing helps prevent scratches to the product and the machine.)

SCRAP/DISPOSAL: Product is made of materials which can be disposed of safely without special precautions at the end of its useful life.

WARRANTY: This product carries a limited-lifetime warranty against defects in workmanship and materials arising under normal use by the original consumer. Contact your supplier or Bodypoint for warranty claims.

For more information on Bodypoint products, and a list of distributors outside the USA, go to www.bodypoint.com.

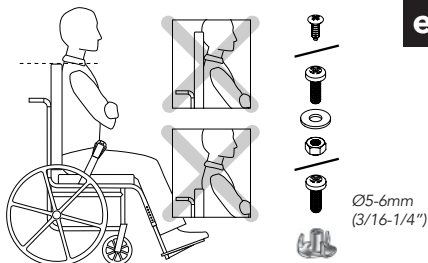
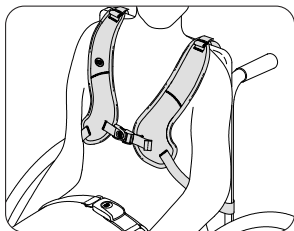


Bodypoint Europe BV
Kerkstraat 29
7396 PD Terwolde
The Netherlands



Medical
Device

558 First Ave. S., Suite 300 | Seattle, WA 98104 | 206.405.4555 | 800.547.5716 | www.bodypoint.com

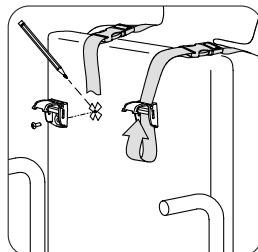
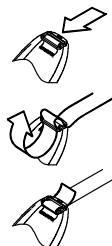
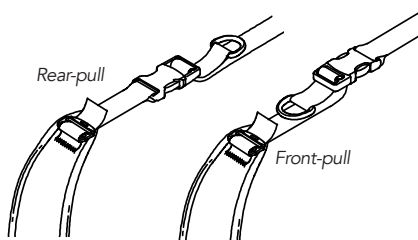


INSTALLATION

Seat user in wheelchair and establish correct posture with Pelvic Support Belt. Place PivotFit shoulder harness pad on chest with upper straps over backrest. Position straps between neck and shoulder joint. Sternum strap should never rise above user's sternum.

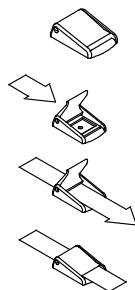
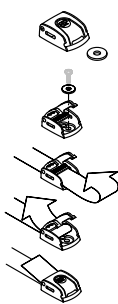
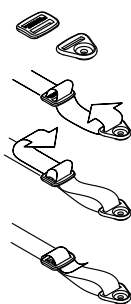
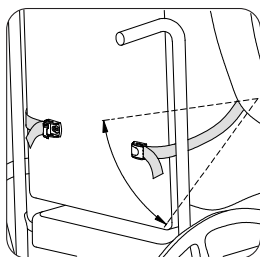
INSTALLATION REQUIREMENTS

1. Wheelchair with a solid backrest or strap guides set approximately at shoulder height (adjust up/down for pressure distribution).
2. Mounting screws with a minimum pullout strength of 90kg (200lbs) (Not included in package).



TOP STRAPS

1. Determine desired adjustment pull direction and attach top strap to harness.
2. Adjust each shoulder strap for a comfortable fit, according to the user's shoulder width and sitting position. Mark backrest for mounting screws.
3. Attach to backrest using Bodypoint end-fittings and suitable fasteners.



Cam Buckle
(optional)
Suitable
for users up
to 75kg

LOWER STRAPS

Wrap lower straps around backrest without obstructing other devices on wheelchair. Mount end-fittings between the lowest rib and the seat. Attach using suitable fasteners.

SAFETY CHECK

Have user lean forward and from side to side to check fit. Check for:

1. Normal operation of buckles and adjustment straps
2. Comfort – If rubbing neck, relocate upper straps.
3. Position – If too high or too low adjust lower straps.
4. Interference with other devices – Relocate straps as necessary to clear seat tilting mechanism, armrests, accessory pads, or feeding tubes.

