

OSKA™ Alto⁴

Series3-V4



CHANGING LIVES



MISSION:
CHANGING LIVES



GOAL 1

ELIMINATE AVOIDABLE PRESSURE DAMAGE



GOAL 2

IMPROVE QUALITY OF LIFE



GOAL 3

REDUCE COSTS AND LITIGATION RISK

OSKATM Alto⁴ Alternating air full replacement mattress

Series3-V4



SPECIFICATION

PRODUCT CODE	DESCRIPTION	SIZE	MAX USER WEIGHT
MA1130	Single	88x200x20cm	175kg
MA1132	King Single	105x200x20cm	175kg

This full replacement pressure relief system is used as an aid in the prevention and treatment of pressure damage up to and including category 4.

The outer cover is made from bi-elastic PU/Polyester coating which is a vapour permeable material and has elastic properties, allowing for interface movement to help lower the risk of shear damage.

The "easy-to-use" fully digital pump has very clear weight settings and alternating cycle settings.

Prevention:	Very High Risk
Treatment:	Category 4
Comfort:	★★★★
Type:	Replacement

Features

- 20 air cells for increased comfort
- Welded seams for infection control
- CPR valve
- Cable tidy to save damage to wires
- Transport function
- Static cells in head end
- Quick connectors
- Static mode
- Auto firm mode
- 2 part cells for protection against deflation
- Anti deflation mode in event of power loss
- Self sealing connections in case of cell puncture
- Static air base for comfort, preventing "bottoming out" and remains inflated for X hours without power



DUAL CABLE MANAGEMENT

Cable management is standard on both left sides of the mattress.



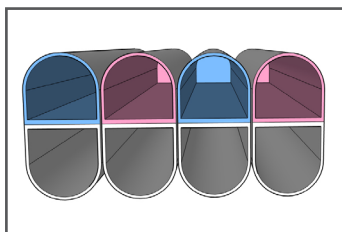
WELDED SEAMS

Regular sewn seams are ideal for bacteria to grow in because of all the holes. Welded seams are melted or welded together using high frequency vibrations meaning there are no holes or gaps for bacteria to get into. This helps reduce the spreading of infection.



WHISPER QUIET DIGITAL PUMP

Static mode, inflates all of the cells in the mattress and keeps them consistently inflated. Alternating pressure, alternates the inflation and deflation between the cells in an A/B pattern. Just 30 dBA!



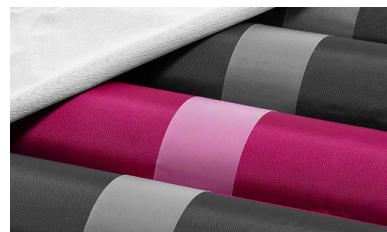
CELL IN CELL

50% of body is relieved. Static base to prevent "bottoming out."



SELF SEALING

In the unlikely even that a bladder/cell is compromised, simply disconnect & mattress will continue to operate normally.



REPLACEMENT CELL

Included FOC to reduce downtime & hassle.

The Ultimate Mattress Covers



PRESSURE RELIEF

V-Guard Technology mattress covers are designed to significantly reduce pressure ulcers. Our formulations reduce friction and help disperse moisture, both of which are major contributing factors to the formation of pressure ulcers.



PATIENT COMFORT AND DURABILITY

V-GUARD Technology mattress covers are designed to provide comfort

- ☉ Multi stretch:
- ☉ Breathable: The moisture vapour transfer or “breathability” properties of V-Guard Technology help improve patient comfort.
- ☉ Offers exceptional durability without compromising comfort.



INFECTION CONTROL AND CLEANING REGIME

V-GUARD Technology mattress covers incorporate infection control and anti-decubitus characteristics. Our mattress covers provide an impenetrable barrier to viruses and bacteria. To clean, wipe down with warm water and mild detergent. If required cover can be machine wash <95°C. Cleaned with chlorine based chemical <10,000 ppm concentration.



LEGISLATION

V-Guard Technology mattress covers meet the latest legislative requirements including:

- ☉ DecaBDE and Halogen free
- ☉ Reach and ROHS compliant
- ☉ Biocidal Products Regulation compliant
- ☉ Flame retardent cover



TECHNICAL SPECIFICATION SUMMARY

V-Guard Technology mattress covers boast an outstanding collection of technical properties that have been developed to make them the ultimate mattress covers for your organisation:

- | | |
|--|--|
| ☉ Hydrolysis resistance >1 year | ☉ Washable to 95°C |
| ☉ Excellent resistance to active chlorine | ☉ Antibacterial and Antifungal treated |
| ☉ Anti-decubitus | ☉ HF Weldable |
| ☉ FR to BS7175 Crib 5 / Crib 7 variant available | ☉ MVP (moisture vapour permeability) |
| ☉ Autoclave resistant | ☉ WPR >5m (water penetration resistance) |
| ☉ Dry cleanable | |

With no clear algorithm or selection guide it can be difficult to know what mattress you should be selecting for your patients.

Although the European Pressure Ulcer Panel (EPUAP 2014) gives an overview which is currently followed in clinical practice, for up to a Category 2 pressure ulcer when the client is able to reposition, or an air mattress is contraindicated, a non pumped system may be used.

For those with deep tissue injury, or category 3 or 4, a pumped system should be considered to support the underlying circulation and intermittent offloading of the bony prominences between turns.

To make this clear OSKA have devised a system, the OSKA SELECTOR™, to help carers identify if the patient is on the correct mattress.

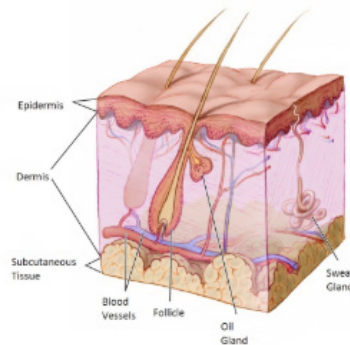
Where assessment and reassessments of risk for patients must be done holistically by a clinician, the dot system aims to serve as a guide or prompt.

Please note that no support surface can replace turns or repositioning which are still mandatory for those at risk as per the NICE guidelines (NICE 2015).

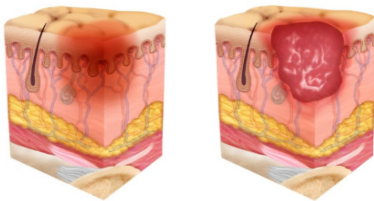
Categorization of pressure ulcers*



Healthy Skin



Superficial Category 1-2

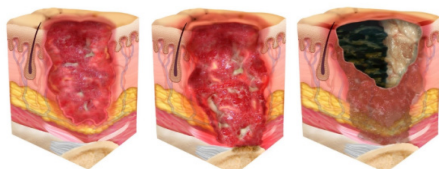


- Intact skin with non-blanchable redness of a localized area usually over a bony prominence. Other signs of the area such as discoloration, oedema, warmer or cooler as compared to adjacent tissue may also indicate pressure injury. (Category 1 may be difficult to detect in individuals with dark skin tones. May indicate “at risk” persons.)

- Damage to the epidermis and/or dermis. The ulcer is superficial and may be visible as a blister on or an abrasion of the skin.



Deep / Unstageable Category 3-4

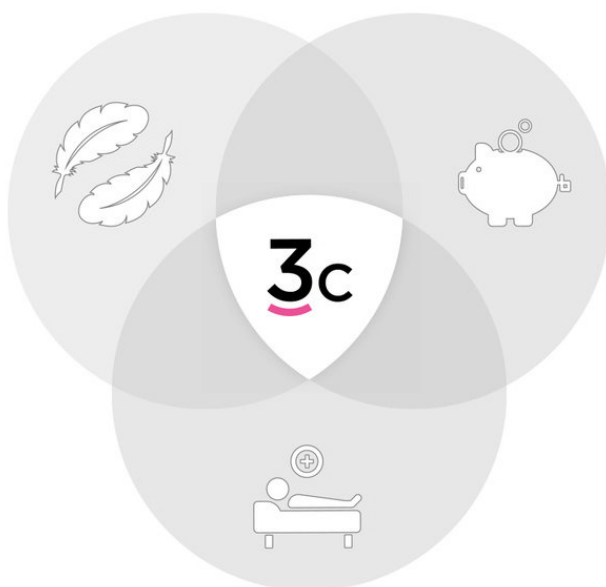


- Involves damage to the full thickness of the skin and includes injury to, or necrosis of, the subcutaneous tissue layer, and may extend down to but not through the underlying fascia.
- Deep tissue damage, necrosis or damage to the muscle, bone or connective tissue with wound cavitations.
- Full thickness skin and tissue loss in which the extent of tissue damage within the ulcer cannot be confirmed because it is obscured by slough or eschar. If slough or eschar is removed, a Stage 3 or Stage 4 pressure injury will be revealed.

THE 3c CONCEPT

We deliver specialist care products that enable healthcare professionals to make a difference. OSKA are continually developing pressure care products that meet the criteria of being clinically beneficial to patients, comfortable and affordable.

You know that every patients need is different, and so do we. That's why our 3c solution helps us to help you deliver the highest standard of care possible.



CLINICAL

Outstanding performance

Prevention is better than cure

Focus on shear and pressure reduction



COMFORT

Ideal for palliative and dementia care

Holistic care

Eliminate non-compliance



COST

Reduce use of expensive air mattresses

Reduce electricity, servicing
and repair costs

Reduce risk of litigation costs



OSKA™

1-3 College Hill
London EC4R 2RA

Australia wide
1300 370 370

