

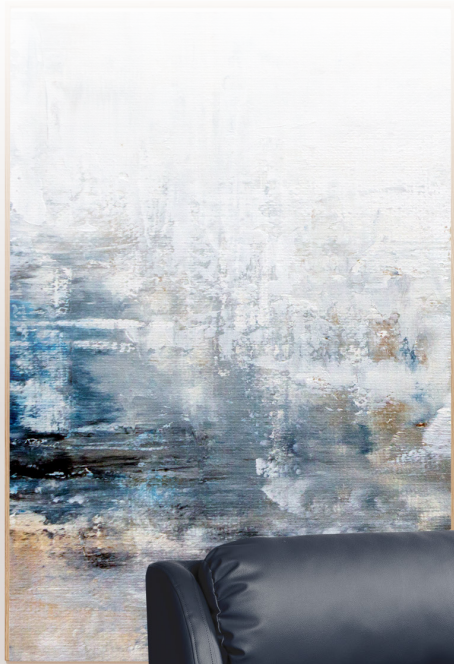
rehabhire & sales

YOUR
LEADING
HEALTHCARE
EQUIPMENT
PARTNER



M5 Custom

Bariatric Lift Recliner



1300 000 030 | rehabhire.com.au

YOUR
LEADING
HEALTHCARE
EQUIPMENT
PARTNER

The M5 is the first choice for a premium bariatric lift chair, with its class-leading Australian-made four-motor mechanism, the culmination of years of research, testing, and design and development by the Oscar in-house engineering team.

Reliability was a key focus of the M5 development process, which is why they put it through thousands of lift cycles while weighted above its rated capacity at each stage of development. This has resulted in the most durable bariatric mechanism on the market.

Rehab Hire & Sales has teamed with Oscar to customise the ideal chair for our bariatric clients, featuring Austex Studio Encore Navy upholstery.

Studio Encore is the ultimate upholstery vinyl, which combines durability with the appeal of genuine leather.

Studio Encore's outstanding performance makes it the best choice for high-traffic areas, including hospitals, facilities, and homes!

Studio Encore is UV-resistant, which enables the vinyl to withstand extreme outdoor conditions. The vinyl fabric is also treated with a Protech coating, a formulation that helps guard against stains and inhibits bacterial growth in healthcare environments.

Features and Benefits

- 4 medical-grade electric motors
- Separate control of the backrest, lift, and footrest
- Right side controller
- 24V rechargeable battery backup
- Memory foam seat cushion
- Pocket spring suspension
- 75mm heavy-duty castors
- Hospital-grade heavy-duty vinyl upholstery
- Armrest covers
- Mahogany showwood arms



Specifications

Size	650	850
Seat Height	500mm	500mm
Seat Width	650mm	850mm
Seat Depth	530mm	530mm
Backrest Height	636mm	688mm
Arm Height	190mm	190mm
Footrest Length	950mm	950mm
Footrest SWL	80kg	80kg
SWL	320kg	320kg

Warranty

Proof of Purchase:

This Oscar Chair is fitted with a compliance card on the rear bottom rail. All cards have a unique ID number called the "SO" number. Warranty is voided if this card is removed.

Electronics and Handset:

2 year warranty on all electrical.

Foam/Frame:

5 year warranty on material and workmanship, excluding general wear and tear.

Fabric:

3 year warranty on the Austex Studio Encore vinyl when the care instructions have been followed.

Battery Pack:

2 year warranty on the battery pack.

Terms

All warranties apply from the date of sale. Where practical the Rehab Hire & Sales will fit warranty replacement parts to minimise repair times for the end user. All warranty claims are to be raised with Rehab Hire & Sales. Rehab Hire & Sales will liaise with the manufacturer to process the claim.

Exclusions

- Damage due to incorrect use of the chair.
- General wear and tear.
- Weight capacity having been exceeded.
- Any modification made to the product by the consumer or a 3rd party without prior written approval from Rehab Hire & Sales to the nature and extent of the modification.
- Minor variations in the finish of the product which does not affect the products value of fitness for its intended purpose.

rehabhire & sales

1 300 000 030

320 Lorimer Street Port Melbourne
contact@rehabhire.com.au
rehabhire.com.au

rehabhire & sales **REPAIRS AND SERVICE**

REGULAR MAINTENANCE OR REPAIRS

1 300 000 030

Unit 6 | 52 Wirraway Drive Port Melbourne
service@rehabhire.com.au
rehabhire.com.au/repairs-and-service

rehabinstallation

CAN MODIFY EVERY ROOM IN YOUR HOME TO
ENSURE IT IS ACCESSIBLE, SAFE, AND COMFORTABLE

1 300 000 030

320 Lorimer Street Port Melbourne
contact@rehabinstallation.com.au
rehabinstallation.com.au



Registered NDIS Provider