

Quick Installation Guide



Min. 15 kg
Max. 250 kg



Min. -20°C
Max. 55°C



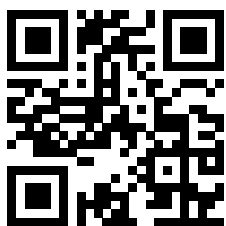
+ 2.400 m
- 50 m



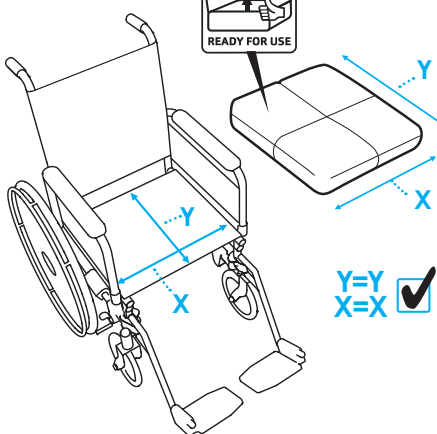
Min. 0%
Max. 100%



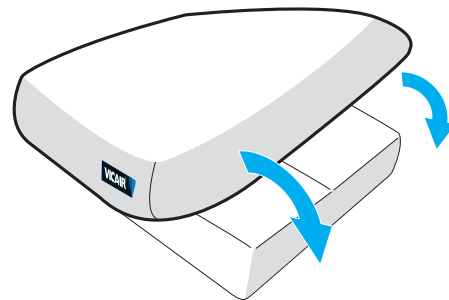
<https://www.vicair.com/4-mnl>



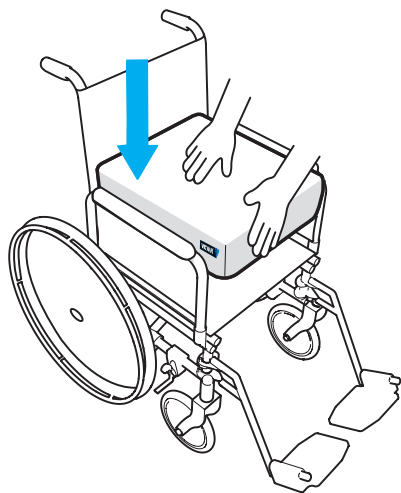
1



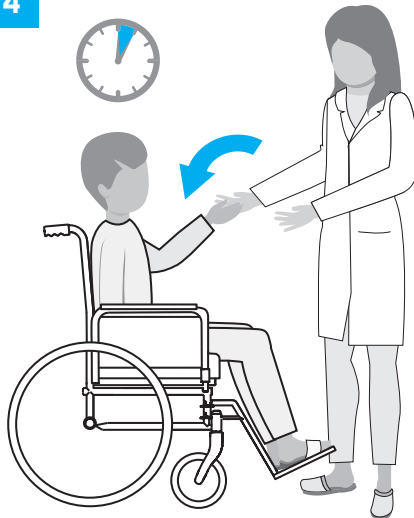
2



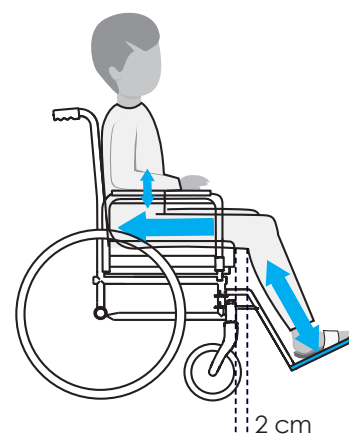
3



4



5

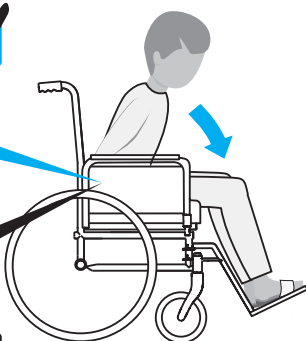
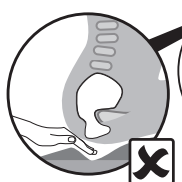
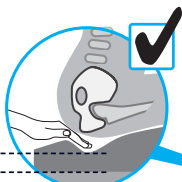


6

5 min.

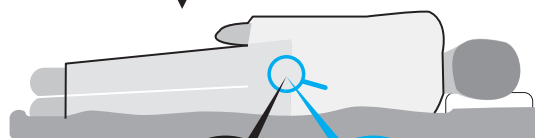


Min. 2,5 cm



7

15 min.





1300 000 030

320 Lorimer Street Port Melbourne
contact@rehabhire.com.au
rehabhire.com.au



1300 000 030

Unit 6 | 52 Wirraway Drive Port Melbourne
service@rehabhire.com.au
rehabhire.com.au/repairs-and-service



1300 000 030

320 Lorimer Street Port Melbourne
contact@rehabinstallation.com.au
rehabinstallation.com.au