

Assembly set rearview mirror on arm support with / without operating module

for R-Net / VR 2

Assembly manual

Note:

The following assembly is to be carried out in a specialist workshop.

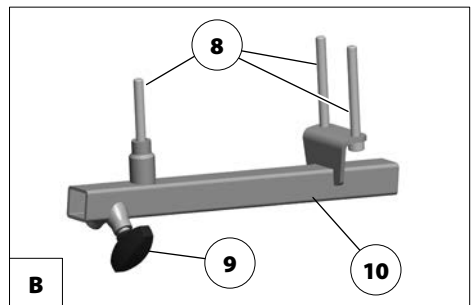
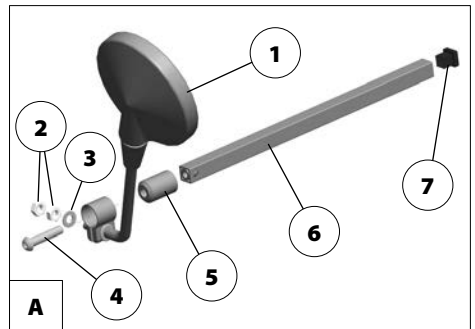
Application

The assembly set serves to refit a rearview mirror to the arm support with / without operating module.

Overview

[A] Assembly to arm support without operating module:

- (1) 1x Rear-view mirror
- (2) 2x Hexagon nut M8 DIN 934
- (3) 1x Washer B 8.4 DIN 125
- (4) 1x Fillister head screw M 6 x 35
- (5) 1x Bracket bolt
- (6) 1x Telescopic tube
- (7) 1x Square plug

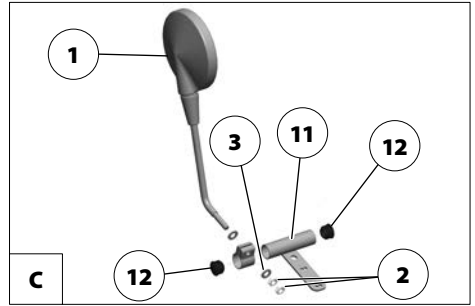


[B] Assembly to Ergostar-arm support without operating module (additional assembly material):

- (8) 3x Fillister head screw M6 x 60
- (9) 1x Wing screw
- (10) 1x Receptacle

[C] Assembly to arm support with operating module:

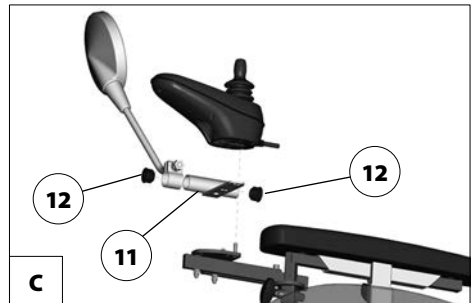
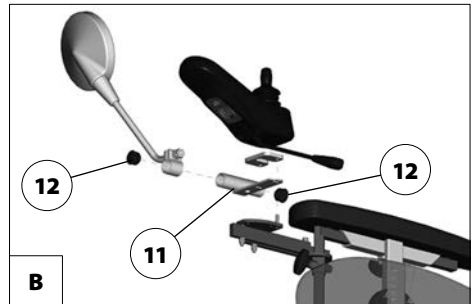
- (1) 1x Rear-view mirror
- (2) 2x Hexagon nut M8 DIN 934
- (3) 1x Washer B 8.4 DIN 125
- (11) 1x Rearview mirror bracket
- (12) 2x Segment plug



Assembly to operating module

With the assembly set the rearview mirror can be mounted underneath the operating module [A].

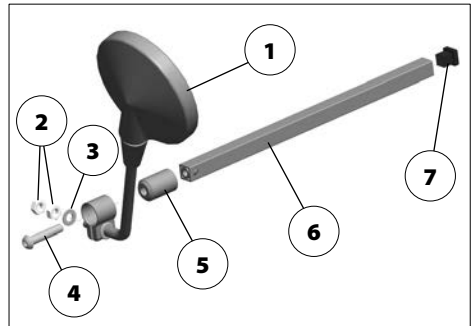
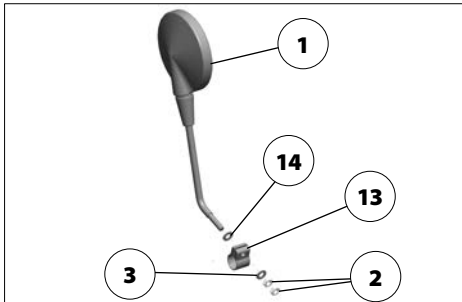
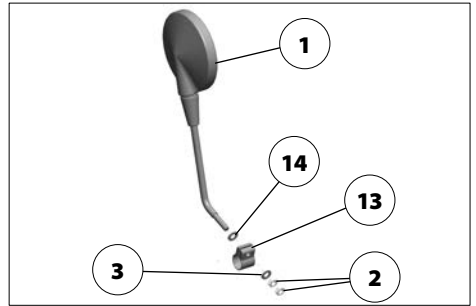
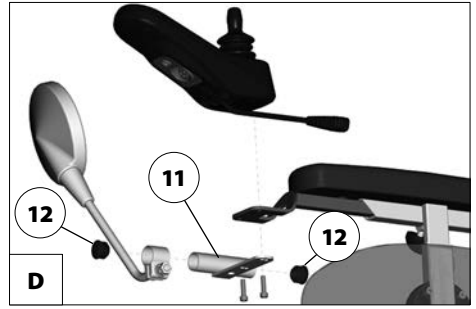
1. Press the lamella plugs (12) into the rearview mirror bracket (11).
2. Screw the operating module off of the operating module bracket.
3. Mount the operating module and the rearview mirror bracket (11) with the previously dismantled screws depending on operating module bracket and operating module back onto the operating module bracket [B], [C], [D].
4. Replace the hex nut M 8 and the spring washer 8 supplied with the rearview mirror by:
 - (2) 2x Hexagon nut M8 DIN 934
 - (3) 1x Washer B 8.4 DIN 125.
5. Slide the clamping shell (13) onto the rearview mirror bracket (11).
6. Insert the rearview mirror (1) according to the attachment side with a washer (14) in to the clamping shell (13), align it and mount with pos. (2)+(3).
7. With swivelling operating module brackets check the swivelling function.



Assembly to arm support without operating module

With the assembly set the rearview mirror can be mounted underneath the arm support on the side opposite to the operating module [A].

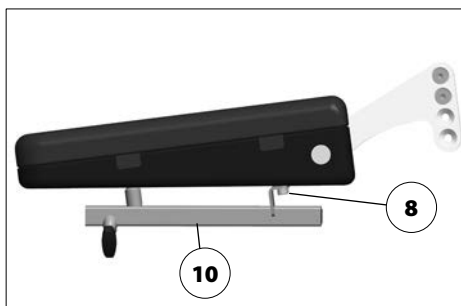
1. Screw the bracket pin (5) with a fillister screw (4) in front of the telescopic rod (6).
2. Press the square plug (7) into the telescopic rod (9).
3. Insert the telescopic tube (6) into the receptacle underneath the arm support pad and tighten with wing screw 9 [A].
4. Replace the hex nut M 8 and the spring washer 8 supplied with the rearview mirror by:
 - (2) 2x Hexagon nut M8 DIN 934
 - (3) 1x Washer B 8.4 DIN 125.
5. Slide the clamping shell (13) onto the holding pin (5).
6. Insert the rearview mirror (1) according to the attachment side with a washer (14) in to the clamping shell (10), align it and mount with pos. (2)+(3).



Assembly to Ergostar-arm support without operating module

With the assembly set the rearview mirror can be mounted underneath the arm support on the side opposite to the operating module [A].

1. Take out the attachment screws underneath the arm support pad.
2. Screw together the receptacle (10), arm support pad and arm support bracket with the three fillister head screws (8).
3. Further assembly is carried out analogue to chapter < Assembly to arm support without operating module >.



This product in combination with the electric wheelchair is conform with the EC-directive 93/42/EEC (MDD) and from 25th May 2021 fulfils the valid requirements of the regulation (EU) 2017/745 for medical devices.

©MEYRA 205 341 701 (Status: 2021-05) All technical modifications reserved.

MEYRA GmbH

Meyra-Ring 2
32689 Kalletal Kalldorf
GERMANY



Tel +49 5733 922 - 311
Fax +49 5733 922 - 9311



info@meyra.de

www.meyra.de