

rehabhire & sales

YOUR
LEADING
HEALTHCARE
EQUIPMENT
PARTNER

ELATA[®]

Alternating Air System

1300 000 030 | rehabhire.com.au



ELATA®

Zero preventable pressure injuries. That's the goal.

Prevention starts early. Comfort should be effortless.
Confidence should feel like peace of mind.

Elata®, derived from the Latin word "elatus", meaning elevated, reflects our purpose, which is to deliver personalised, intuitive pressure care that protects life with dignity, comfort, and trust.

We believe true care means more than prevention. It means imagining a future where patients feel weightless and supported in such a way as if no mattress exists at all. Not just reducing pressure, but elevating the body beyond it, removing the risk entirely.

Every Elata® innovation moves us closer to that vision. From pumps that adapt in real time, to hybrid systems that evolve with each client, we are building today for tomorrow's breakthroughs.

Not just supporting patients where they are but uplifting them toward what's possible.

Behind it all is advanced Elata® technology that quietly senses, adapts, and streamlines setup, so clinicians can focus on care, not settings.



WHY WE EXIST

We believe in zero preventable pressure injuries.

It's ambitious but it's necessary. Pressure injuries cause complications. They also add workload and cost. We act before that pain starts.

WHAT THIS MEANS

- **Care** that preserves dignity.
- **Compassion** that simplifies decisions.
- **Commitment** to better outcomes, every day.

HOW WE DELIVER

Advanced systems that adapt to every patient and pathway. Designed to simplify prescription, enhance comfort, and reduce clinical risk.

We deliver personalised, intuitive pressure care, protecting life with dignity, comfort, and trust.



Battery Backup with **Elata PowerGuard™** for up to 12 hours*



Lock/Unlock user Interface



Alarm Silence button



Elata AdaptiveMode™ for personalised responsive therapy



Constant Low Pressure (CLP) Mode*



Max Inflation Mode



Pressure Comfort Setting*



Service Required Alarm and Diagnostics



Pump/Mattress Disconnection Alarm



Low Pressure Alarm



Backrest Tilt Sensor auto support with **Elata TiltSense™***



**Available on EP20AU model only. See Instructions For Use (IFU) for details.*

MEET ELATA® TECHNOLOGY

THE PUMP THAT KNOWS YOUR MATTRESS AND WHAT TO DO NEXT.

Elata ID™ pairs the pump and mattress automatically, then sets the right mode. It's true **plug and go. No menus. No guesswork. Just care.**

Why it matters:

- Right mode, first time.
- Safer defaults.
- Faster handover.
- Less training.

Quiet by design

Premium compressor, intelligent air pressure management and anti-vibration control deliver smooth inflation and ultra-quiet operation, for calmer spaces and better rest.

Modes made simple

Control is simple, intuitive, and one-touch, with breakthrough features like **Elata AdaptiveMode™**, Constant Low Pressure (CLP) and Max Inflation.

Safety, always on

Elata PowerGuard™ battery backup (EP20AU only) keeps therapy running during power loss. **Elata SafeHold™** safely powers down to hold stable pressure until mains power returns. Backrest tilt sensing with **Elata TiltSense™** (EP20AU only) adds support when the backrest is raised. Clear, guided alerts keep clients safe.

Built for today and tomorrow

Serviceable design, USB-C service access, diagnostics, and firmware-ready architecture will extend value across your fleet.

Built for teams

Easy to clean silicone touchpad and cable management keep things tidy and simple in busy care environments.

ELATA® TECHNOLOGY

Elata AdaptiveMode™

AdaptiveMode™ takes alternating therapy further. The result is personalised, real-time protection that reduces disturbance. Dynamic therapy made simple, providing consistent comfort and effortless care. Clinician Login lets you override the default alternating mode, adding flexibility when needed.*

Elata TiltSense™

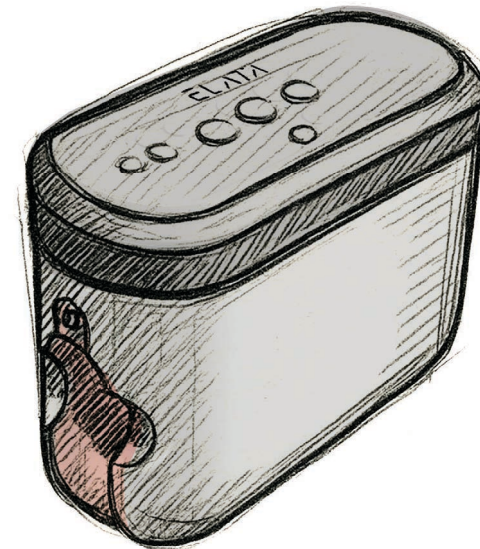
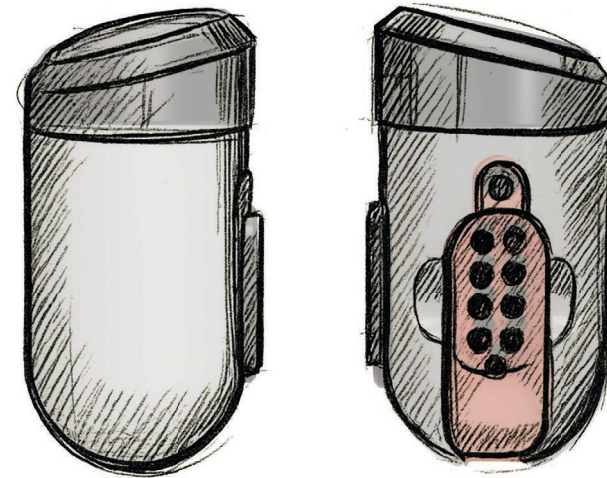
Angle aware support with no guesswork. **TiltSense™** (EP20AU only) uses an internal sensor to detect incremental changes in the backrest angle. As the angle rises, the pump automatically increases pressure. When the backrest lowers, pressure returns to the prior setting. No manual input is required, which helps prevent “bottoming out” and protects comfort when clients are inclined.

Elata SafeHold™

Peace of mind during a power outage. **SafeHold™** stabilises mattress cell pressures, safely powers down, and protects clients.

Elata PowerGuard™

Uninterrupted care, even in a blackout. **PowerGuard™** keeps the EP20AU pump running for up to twelve hours, delivering full therapy and then transitioning to safe low power mode until it reverts to **SafeHold™**.



Scan to learn more about the Elata® pump
*Patent pending



Scan for technical resources

ELATA[®]



ENGINEERED. TESTED. TRUSTED.

WHERE OTHERS SEE ONE FRAME, WE SEE THE WHOLE PICTURE.

We partnered with **Flinders University** to build a **next generation test system**. Traditional mapping captures one static snapshot every 30 minutes. Our system records **thousands of pressure points** every second. This delivers a **true picture** of how weight shifts and movement affects support.

That depth of data underpins Elata's range of mattress models; E300, E400, E500, E600, and E700. So you can trust the results.

AUSTRALIAN DESIGNED & ASSEMBLED. LOCALLY TESTED.

Elata[®] pumps are assembled and rigorously tested here in Australia. That local focus keeps us agile. We listen, adjust, and roll out updates quickly, strengthening performance and delivering the fast, intelligent care clinicians expect.



EVERY PRESSURE INJURY RISK LEVEL. ONE MATCHING SOLUTION.

SIMPLE CHOICES. CLEAR PATHWAYS.

Elata® Range. Quick Category Guide

CATEGORY	MODEL	PURPOSE	PUMP	PG
Home Care	E100, E200	Simple prevention for home and aged care. Default choice in home care pathways.	N/A	9
Clinical Foam	E300	Non-powered. Prevents and treats Stage 1-2 pressure injuries. 9-zone foam with side wall support and heel offloading. Low maintenance.		11
Clinical Hybrid	E400	Use alone for Stage 2 pressure injuries, or step up with a pump to support treatment up to Stage 4. Ideal for home and palliative care. Converts as needs change.	EP10AU	15
Clinical Alternating Hybrid	E500	Alternating air/foam system. Combines comfort with therapy. Treats up to Stage 4 pressure injuries.	EP20AU	19
Clinical Alternating Air	E600	Full alternating air (1-in-2 configuration). Treats up to Stage 4 pressure injuries. Ideal for surgical wards, acute wards, or clients with frailty/reduced mobility.	EP10AU	23
	E700	Advanced alternating (configurable 1-in-4). Auto-setup. Treats up to Stage 4 pressure injuries. For ICU, stable spinal, complex rehab, immobile clients.	EP20AU	27

The EP20AU Pump is fully backwards compatible. It can be used with all Elata pump-ready mattresses (E400 to E700).



Scan to learn more about the range

ELATA[®]

E600

PROVEN ALTERNATING THERAPY. FULL REPLACEMENT. HIGH, STABLE COMFORT.

A full replacement alternating system for prevention and treatment up to Stage 4 pressure injuries. 20 multi-layered TPU air cells reduce noise and deliver consistent therapy so clients rest easier in lasting comfort.

Static Cells Head Area

Designed to provide gentle pressure care for the head.

20 Transverse Air Cells

Multi-layered TPU, noise-reducing air cells combine alternating and static zones for continuous relief and protection.

Self-Sealing Connections

Isolate a punctured cell or create a zero-pressure zone for targeted relief.

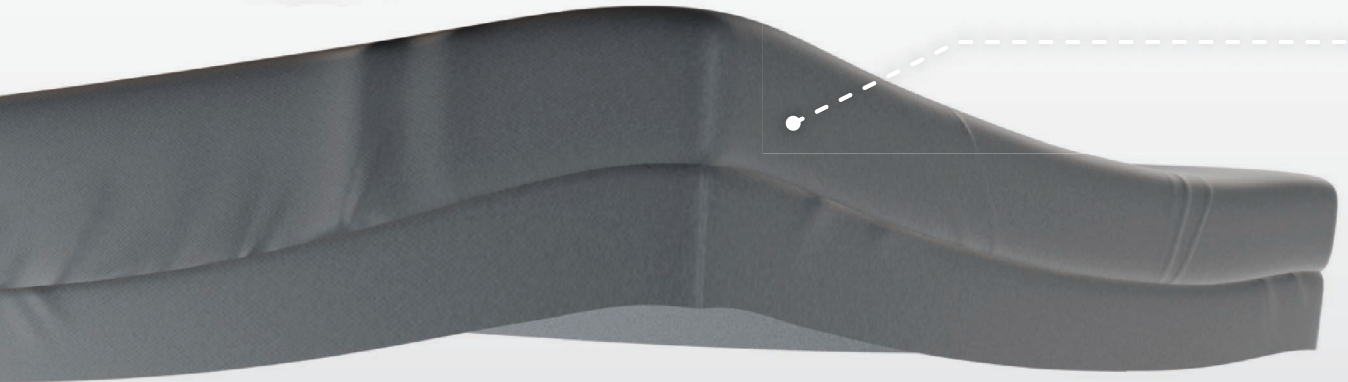
Static Air Base

One third of each cell remains inflated for increased comfort and prevents "bottoming out".

S | KS

KS size includes side wall support
Can only be used with a pump
180 kg SWL



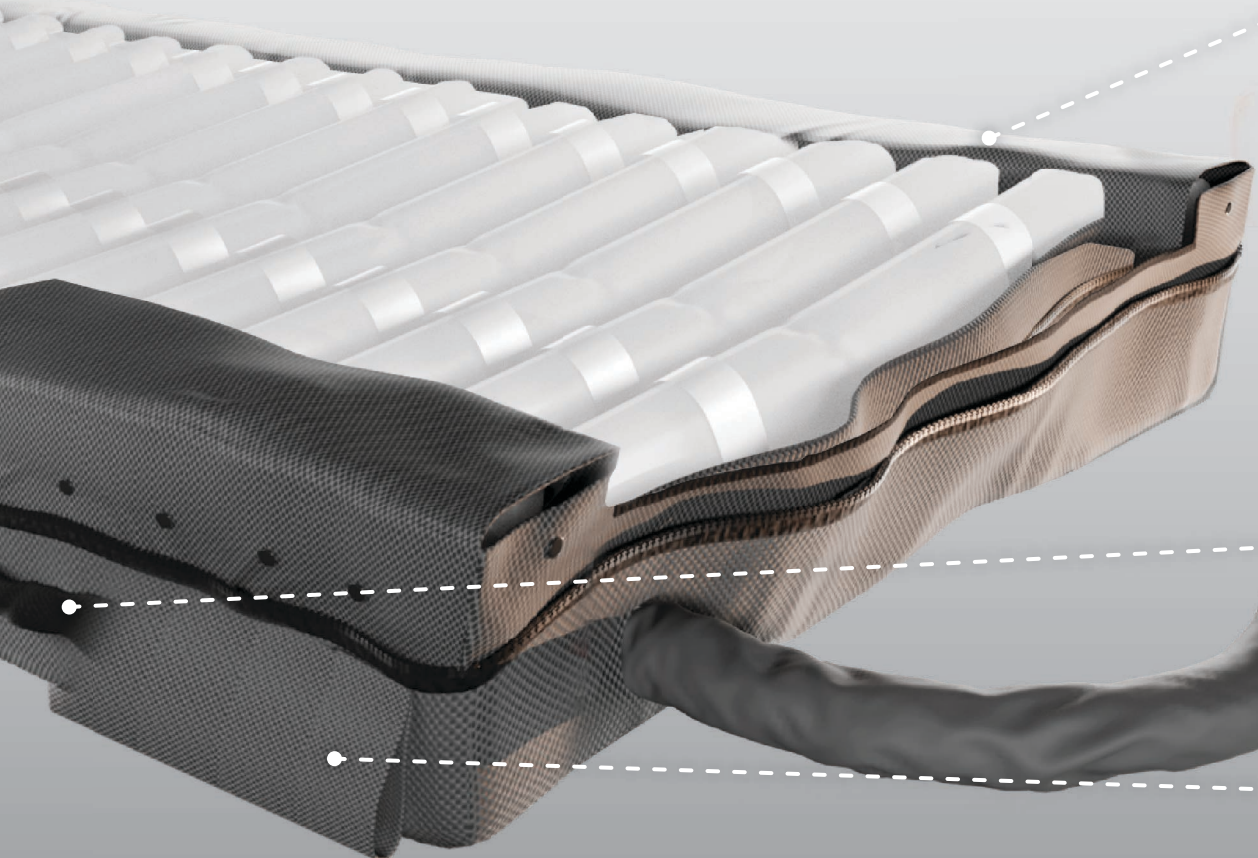


Pure Guard Cover

Easy to clean, with a 4-way stretch, vapour-permeable surface that moves with the user to reduce friction and support immersion and envelopment. It allows moisture to escape while blocking fluids, viruses, and bacteria for safer care.

Hydro Lock Barrier

A welded seam and liquid-resistant zip flap prevent fluid penetration, protecting mattress integrity.



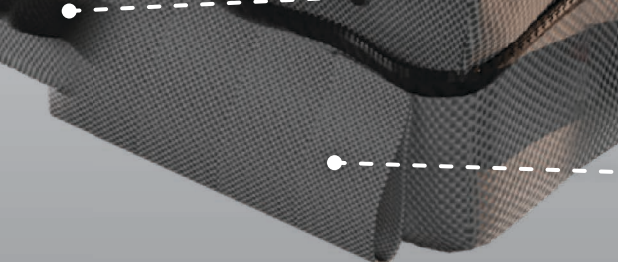
Side Wall Support

(KS models only) Adds stability and edge awareness for safer transfers enhancing comfort, balance and confidence.



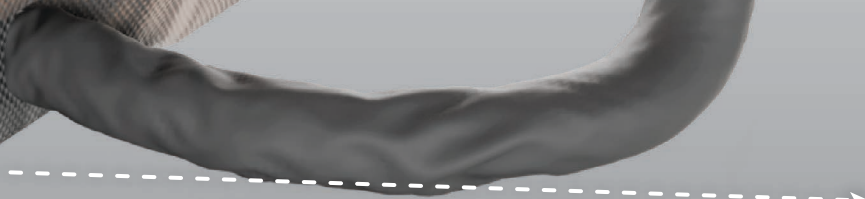
Accessible Handles

To ensure easy control / transport.



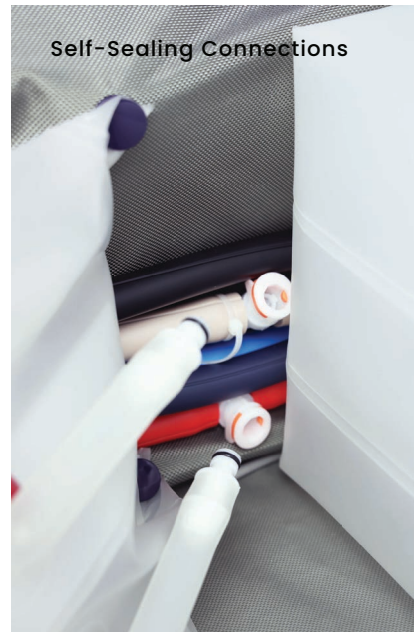
Cable Tidy

To prevent damage to wires.





ALTERNATING AIR MATTRESS E600



Why clinicians choose it:

- **Static Head Cells** for gentle cranial support.
- **Self-Sealing Connections** built-in fail-safe. Designed to deliver targeted pressure relief and safe offloading.
- **Side Wall Support (KS only)** Adds stability and edge awareness for safer transfers, enhancing comfort, balance and confidence.
- **Hydro Lock Barrier** – A welded seam and liquid-resistant zip flap prevent fluid penetration, protecting mattress integrity.
- **Pure Guard Cover**
- Trusted protection for very high-risk patients.
- **With Elata ID™ + EP10AU pump:** Plug, recognise, run. Your setup finished in seconds.

Why it matters:

The Elata E600 Alternating Air System uses **Elata AdaptiveMode™** to adjust for personalised, responsive therapy. It spreads weight evenly across the surface, easing pressure on vulnerable points while keeping the mattress soft, stable, and protective.

Designed for pressure relief and comfort during long stays.

Model E600S	Size: 90 cm * 200 cm * 20 cm SWL: 180 kg
Model E600KS	Size: 105 cm * 200 cm * 20 cm SWL: 180 kg
Mattress Warranty	5 years^
Pump Warranty	10 years conditional^
Compliance	ARTG: 520915 ISO: 14971, 10993

^Refer to Instructions For Use (IFU)

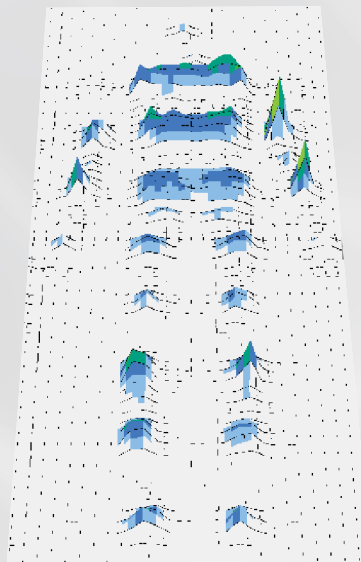
ELATA

Temperature: 22°C - 71.6°F

Weight: 75 kg

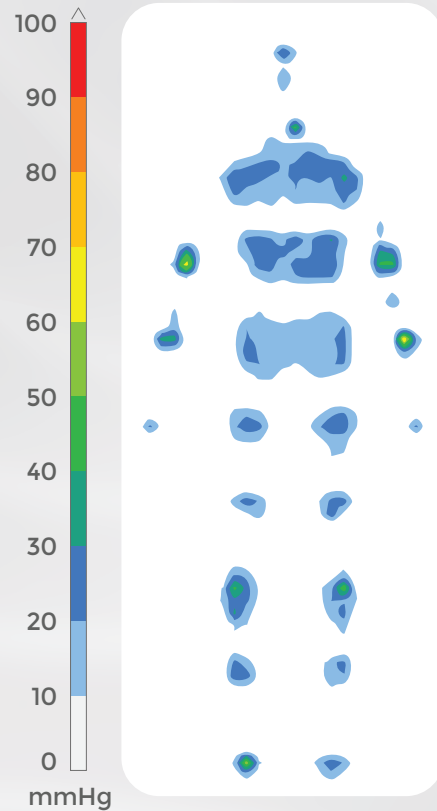
Duration: 60 mins

**Proportional Weighted
95th Percentile Test
Dummy**



POWERED: ALTERNATING SETTING

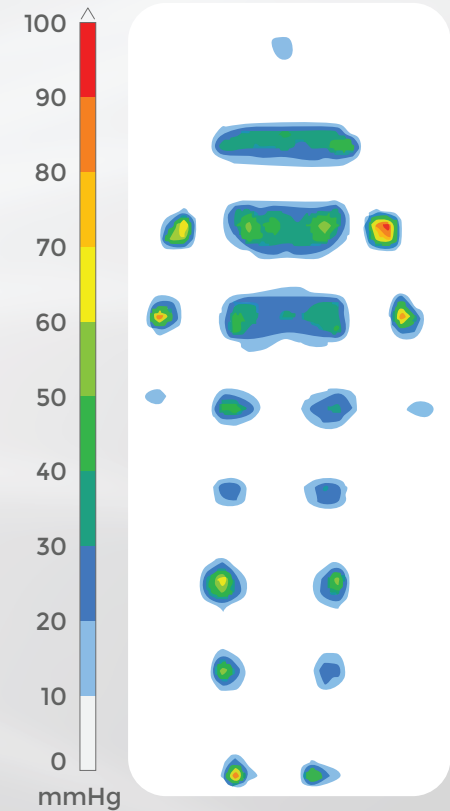
- Mattress: E600
- Date: 2025 / 12 / 01
- MAX: 73.62 mmHg
- Average: 3.16 mmHg
- Frame: 1357 / 3600



**Compatible Pump:
ELATA EPI0AU**



- Mattress: Other Brand
- MAX: 97.77 mmHg
- Average: 4.05 mmHg
- Frame: 985 / 3600



ELATA[®]

E700

LEADING STABILITY, FLEXIBLE CYCLES. WHEN CONTROL AND COMFORT MUST COEXIST.

The E700 runs a 1-in-4 cycle, keeping 75% of the body supported. This lowers peak pressures and enhances comfort while maintaining stability. For higher-risk clients, it can switch to a 1-in-2 cycle, offloading 50% of the body for more intensive therapy.

Static Cells Head Area

Designed to provide gentle pressure care for the head.

Backrest Tilt Sensor

Auto support with ElataTiltSense™.

Self-Sealing Connections

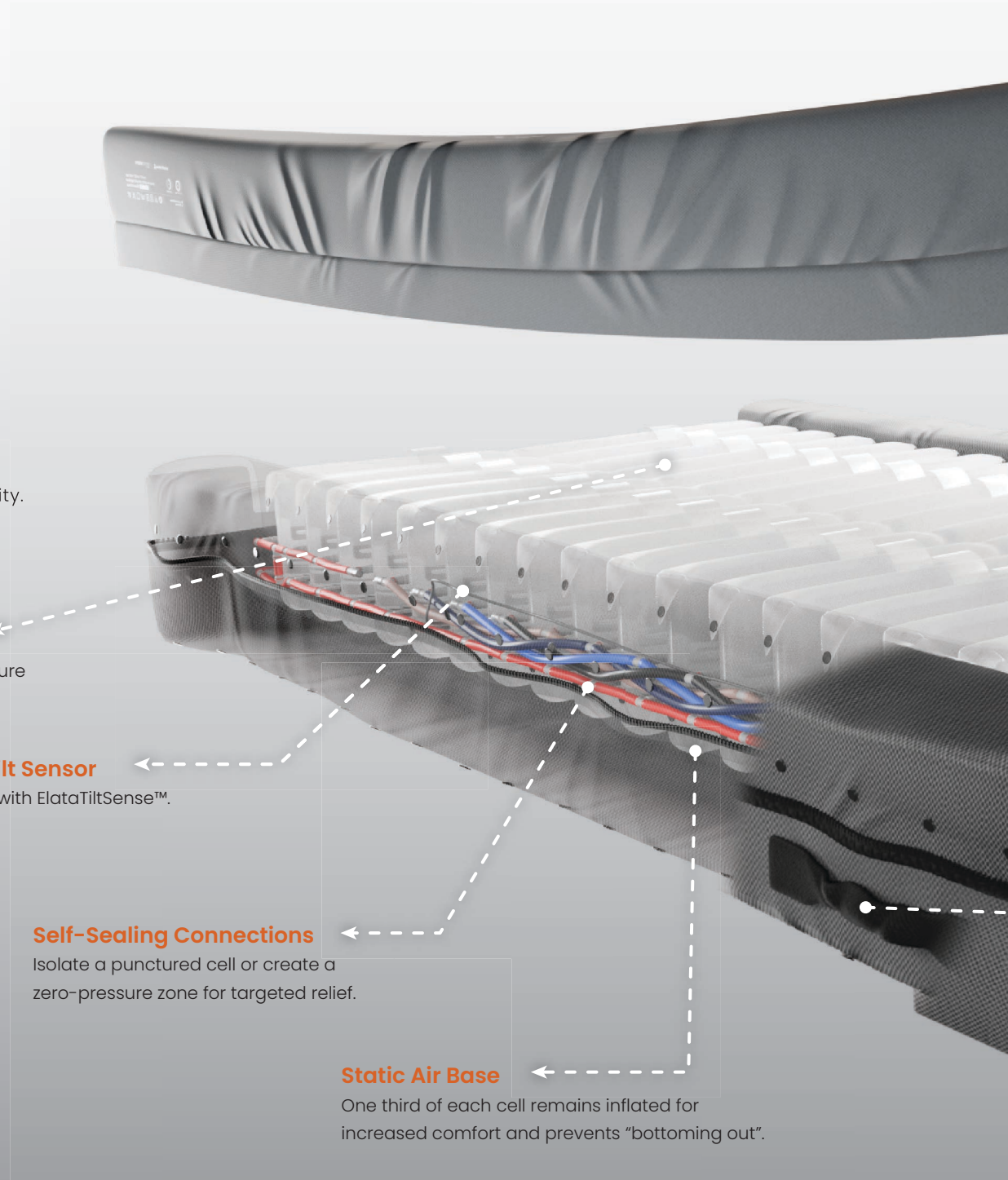
Isolate a punctured cell or create a zero-pressure zone for targeted relief.

Static Air Base

One third of each cell remains inflated for increased comfort and prevents "bottoming out".



KS size includes side wall support
Can only be used with a pump
180 kg SWL





Pure Guard Cover

Easy to clean, with a 4-way stretch, vapour-permeable surface that moves with the user to reduce friction and support immersion and envelopment. It allows moisture to escape while blocking fluids, viruses, and bacteria for safer care.

Hydro Lock Barrier

A welded seam and liquid-resistant zip flap prevent fluid penetration, protecting mattress integrity.

Side Wall Support

(KS models only) Adds stability and edge awareness for safer transfers enhancing comfort, balance and confidence.

Heel Slope

Gentle decline at the foot end reduces heel pressure and helps prevent injuries.

20 Transverse Air Cells

Multi-layered TPU, noise-reducing, air cells combine alternating and static zones for continuous relief and protection.

Accessible Handles

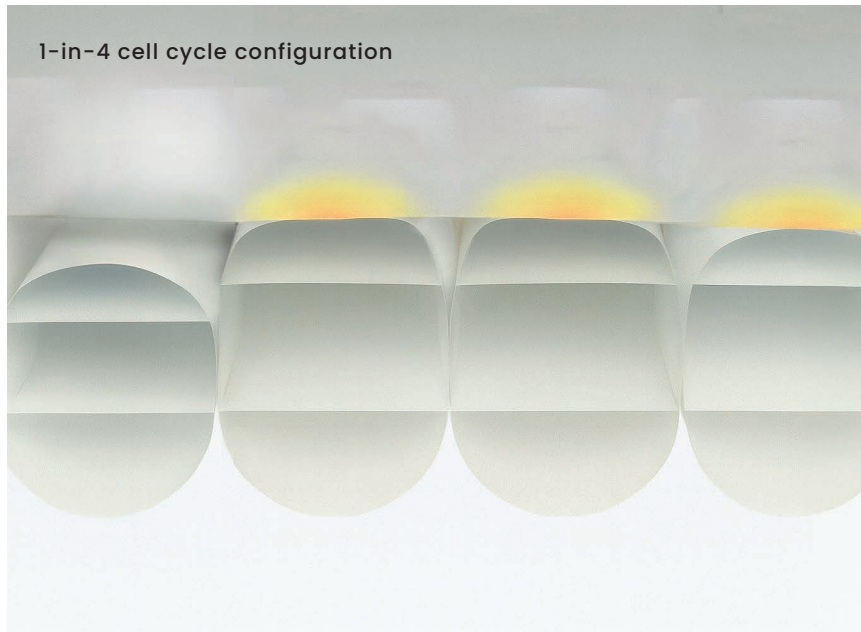
To ensure easy control / transport.

Cable Tidy

To prevent damage to wires.



ALTERNATING AIR MATTRESS E700



Model E700S	Size: 90 cm * 200 cm * 20 cm SWL: 180 kg
Model E700KS	Size: 105 cm * 200 cm * 20 cm SWL: 180 kg
Mattress Warranty	5 years [^]
Pump Warranty	10 years conditional [^]
Compliance	ARTG: 520915 ISO: 14971, 10993

[^]Refer to Instructions For Use (IFU)

Why clinicians choose it:

- **Configure cells** to 1-in-2 or 1-in-4 layout to adapt pressure care treatment to the client/patients needs.
- **Self-Sealing Connection** isolates punctured cells to allow for ongoing pressure care through the rest of the mattress, and allow for independent cell deflation to create zero pressure zones.
- **Heel offloading** and **Heel slope:** Reduces pressure where it is needed most.
- **Elata TiltSense™** adjusts mattress pressure as the backrest rises. The pump automatically increases support, then returns to the prior setting when the backrest lowers.

Pain Management

The Elata E700 Alternating Air System evenly distributes weight across a wide surface area, easing pressure on bony points. This creates a soft, supportive surface that enhances comfort and reduces pain. For clients/patients living with severe discomfort from pressure or limited repositioning, the E700 offers trusted relief as a valuable support alongside pain management interventions.

With ElataID™ + EP20AU pump: The pump instantly recognises the E700 and applies optimal care. With **Elata TiltSense™** automatic backrest adjustment, **Elata PowerGuard™** battery backup, and **Constant Low Pressure (CLP)** mode, the E700 delivers added stability, safety, and uninterrupted comfort beyond the E600 system.

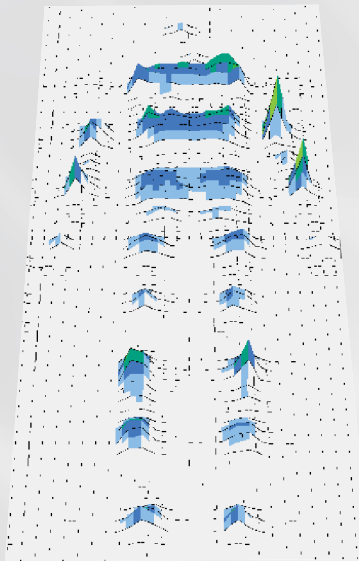
ELATA

Temperature: 22°C - 71.6°F

Weight: 75 kg

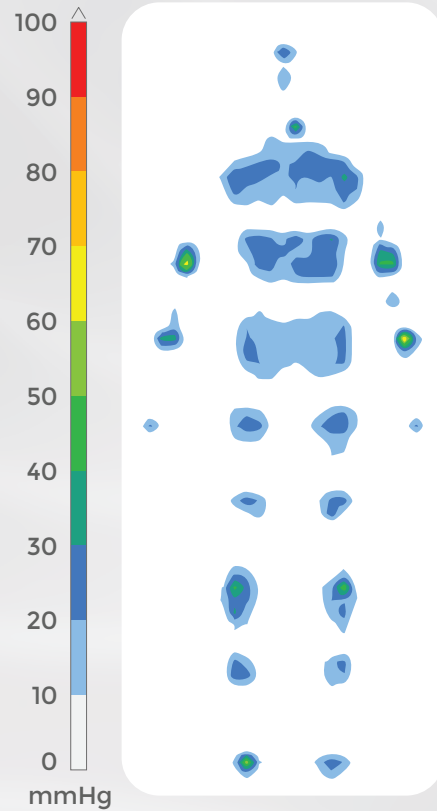
Duration: 60 mins

**Proportional Weighted
95th Percentile Test
Dummy**



POWERED: ALTERNATING SETTING

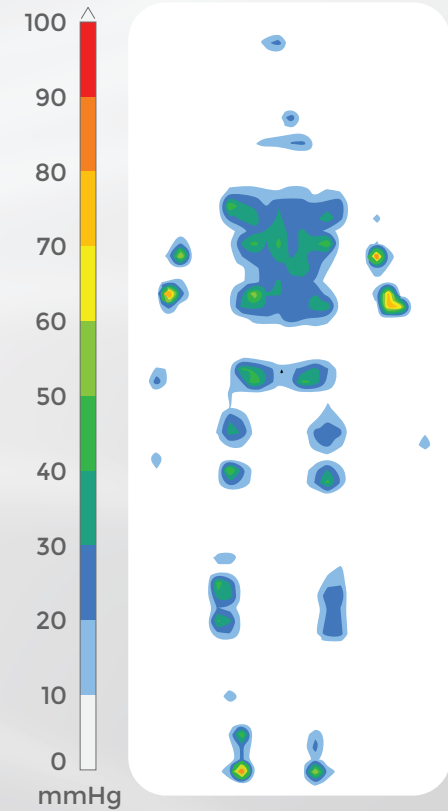
- Mattress: E700
- Date: 2025 / 09 / 12
- MAX: 70.07 mmHg
- Average: 3.05 mmHg
- Frame Cycle A: 1364/3600



**Compatible Pump:
ELATA EP20AU**



- Mattress: Other Brand
- MAX: 94.35 mmHg
- Average: 3.68 mmHg
- Frame: 830 / 3600



TRUSTED PERFORMANCE

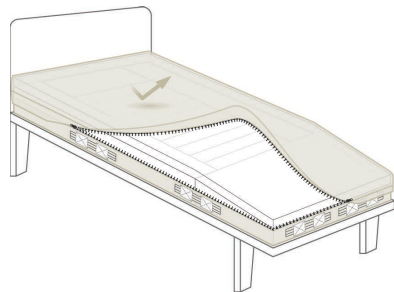
Innovation that feels simple. Support that feels human.

Elata® brings smart, intuitive systems that adapt to every need. Backed by expert support and built to evolve. We keep complexity out of your day, and precision at the bedside.



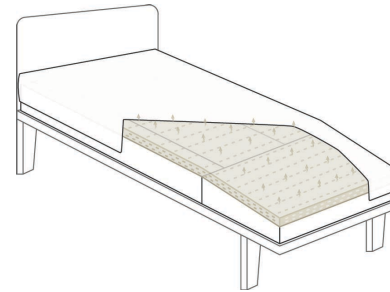
Pure Guard Cover

Easy to clean, with a 4-way stretch, vapour-permeable surface that moves with the user to reduce friction and support immersion and envelopment. It allows moisture to escape while blocking fluids, viruses, and bacteria for safer care.



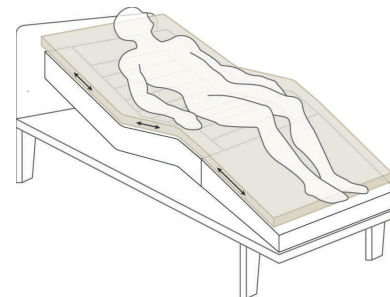
Hydro Lock Barrier

A welded seam and liquid-resistant zip flap prevents fluid penetration, protecting mattress integrity.



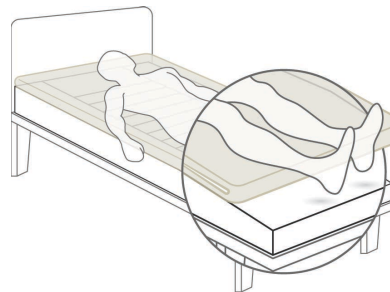
Rebound Core Foam:

High rebound density and microclimate control. It promotes airflow and delivers lasting pressure redistribution. Maintains skin integrity. Increases ease of mobility.



Anti-Shear:

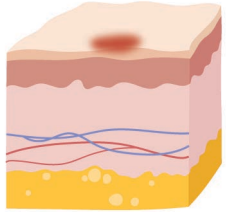
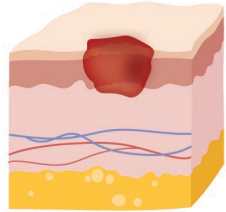
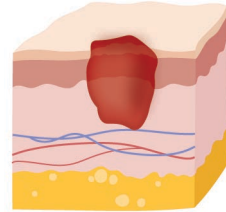
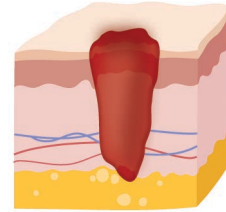
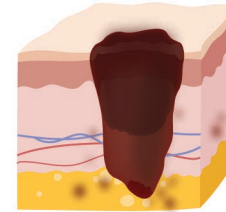
Top foam layer moves with the client when the client is repositioned, helping protect the skin by preventing shear and friction.



Heel Offloading:

Configured to suspend and reduce pressure on the heels, ideal for preventing and treating pressure injuries, including Stage 4.

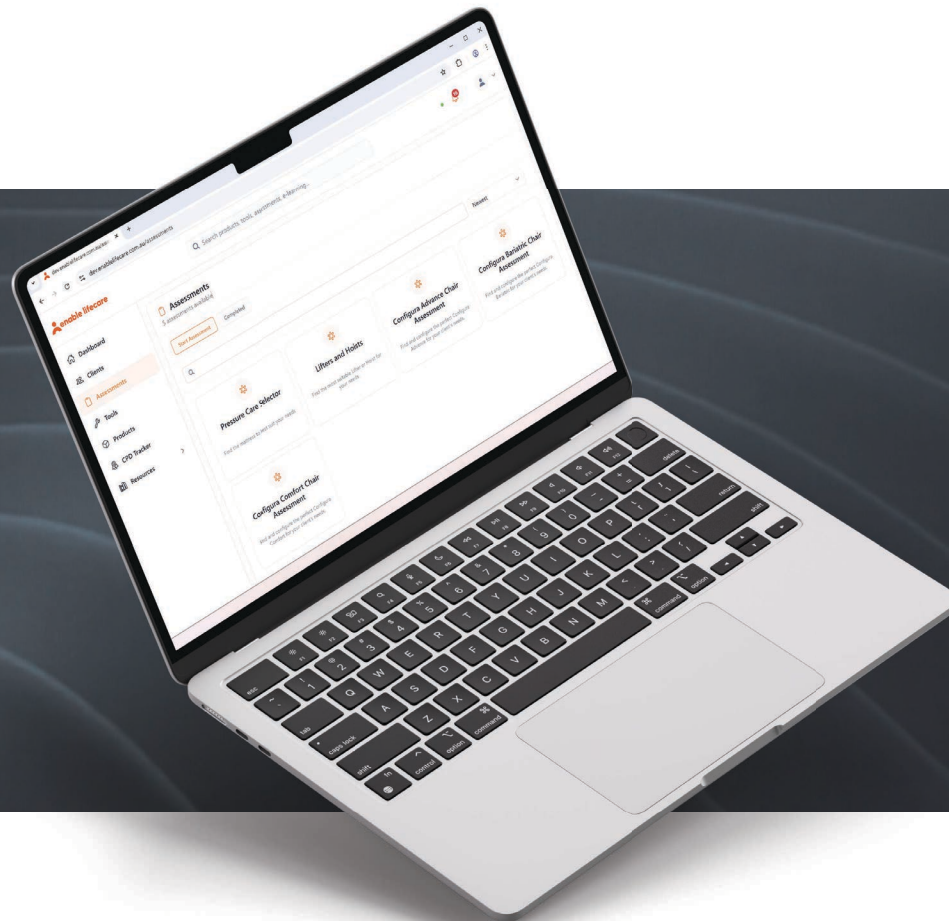
PRESSURE INJURY STAGING (NPIAP/EPUAP/PPPIA)

STAGE 1	STAGE 2	STAGE 3	STAGE 4	UNSTAGEABLE
				
<p>Intact skin. Non-blanchable erythema.</p>	<p>Partial-thickness skin loss. Open wound or intact/ruptured serum-filled blister.</p>	<p>Full-thickness skin loss. Fat is visible. Slough may be visible. No exposed bone, muscle or connective tissue.</p>	<p>Full-thickness tissue loss with exposed or palpable bone, muscle or connective tissue. Slough may be visible.</p>	<p>Full-thickness tissue loss, but extent of tissue loss is hidden by slough/eschar.</p>



Scan to book a trial

support@enablelifecare.com.au • 1300 370 370



MATTRESS SELECTOR

THE RIGHT SYSTEM. FIRST TIME.

Visit app.enablelifecare.com.au/assessments, open the Mattress Selector for a guided match based on risk, setting, and clinical goals.



Not sure which system to choose? Download the Enable Lifecare App to quickly match the right Elata® system for every client.



rehabhire & sales

YOUR
LEADING
HEALTHCARE
EQUIPMENT
PARTNER

1 300 000 030

320 Lorimer Street Port Melbourne
contact@rehabhire.com.au
rehabhire.com.au



rehabhire & sales
REPAIRS AND SERVICE

FOR YOUR
REGULAR
EQUIPMENT
MAINTENANCE
OR REPAIRS

1 300 000 030

Unit 6 | 52 Wirraway Drive Port Melbourne
service@rehabhire.com.au
rehabhire.com.au/repairs-and-service



rehabinstallation

MAKING
EVERYDAY LIFE
IN YOUR HOME
ACCESSIBLE, SAFE,
& COMFORTABLE

1 300 000 030

320 Lorimer Street Port Melbourne
contact@rehabinstallation.com.au
rehabinstallation.com.au

STANDARD IS JUST THE BEGINNING.

// We are passionate about improving pressure care solutions, delivering advanced foam, hybrid, and alternating air mattresses, along with efficient pumps that set new standards in prevention. Through rigorous research and testing, we aim to exceed industry standards. //
We question every detail and ensure each feature serves a purpose.

Ruben Joyce

Ruben Joyce, CEO and Founder

COMPLETE PEACE OF MIND. LONG COVERAGE. REAL PEOPLE. FAST SUPPORT.

- **10 year conditional pump warranty.** Longest in market.
- **In-house service** with fast diagnostics via USB-C log uploads.
- **Education and tools** that simplify trials and prescriptions.

A pressure care mattress is one intervention in a holistic plan. Always assess the whole patient/client.

Scan to see warranty terms

